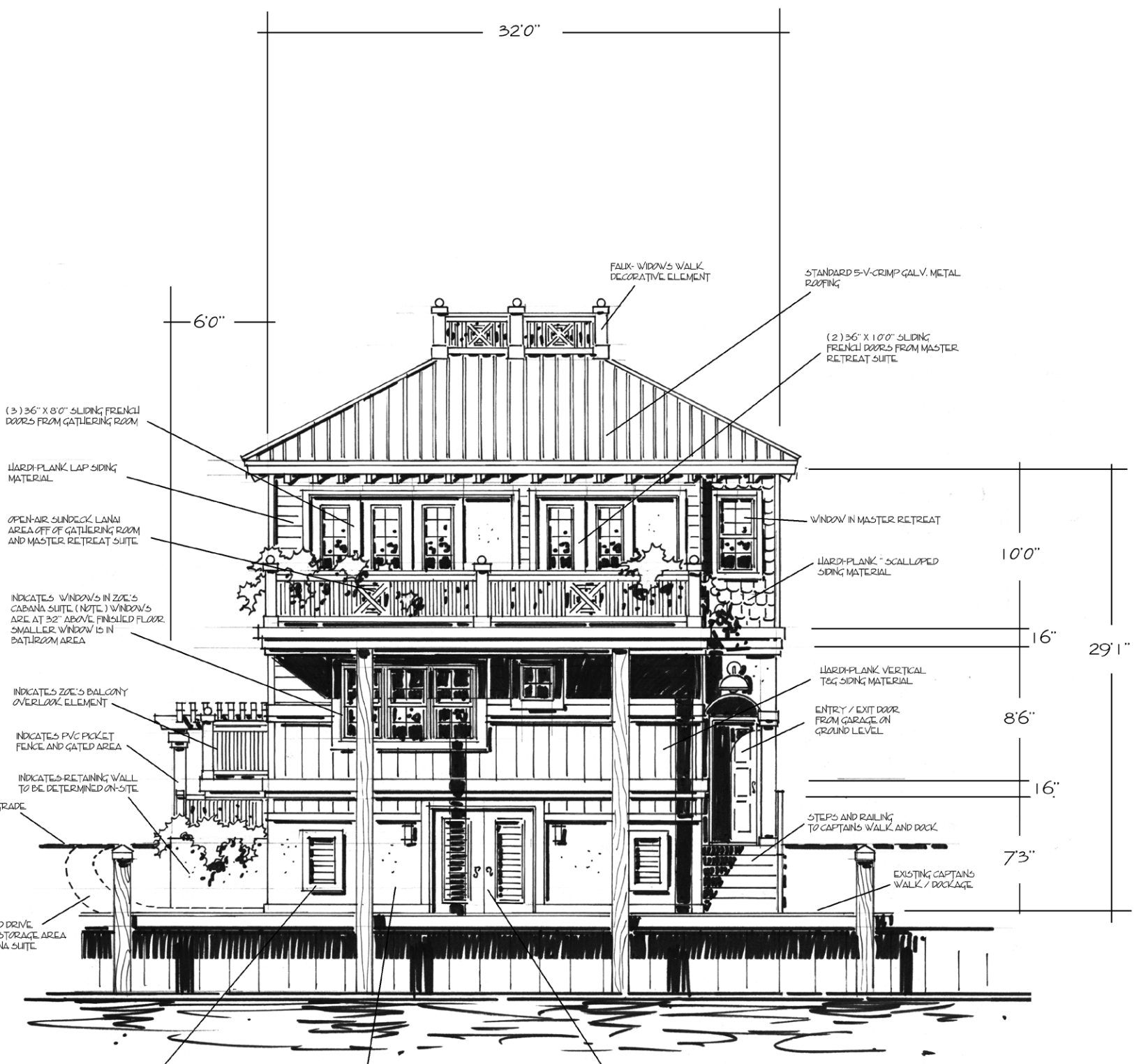


FRONT ELEVATION DESIGN CONCEPT

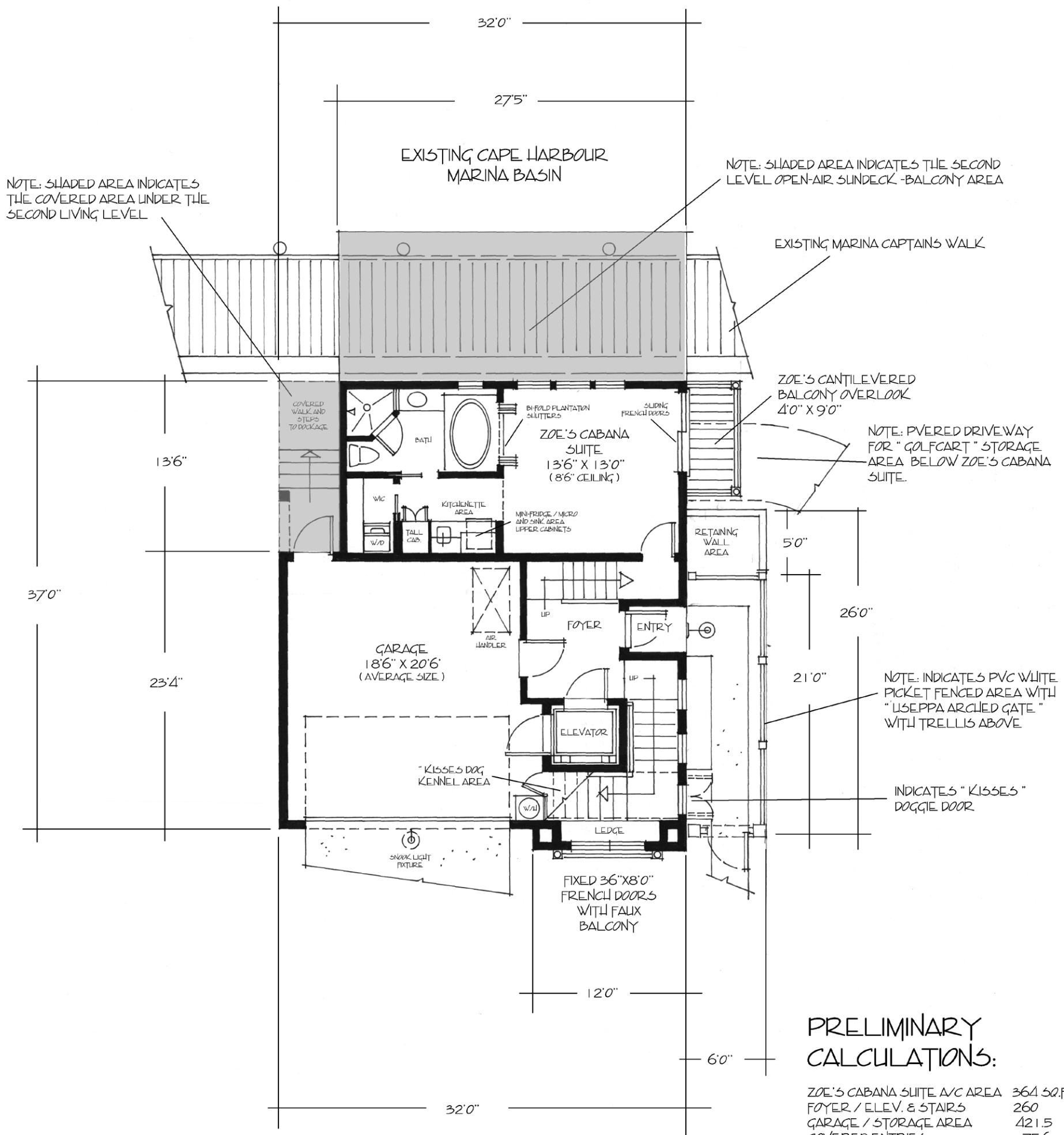


WATERSIDE / REAR ELEVATION DESIGN CONCEPT

WILL'S FUNKY FISH HOUSE

REVISED / FINAL ELEVATION DESIGN CONCEPTS

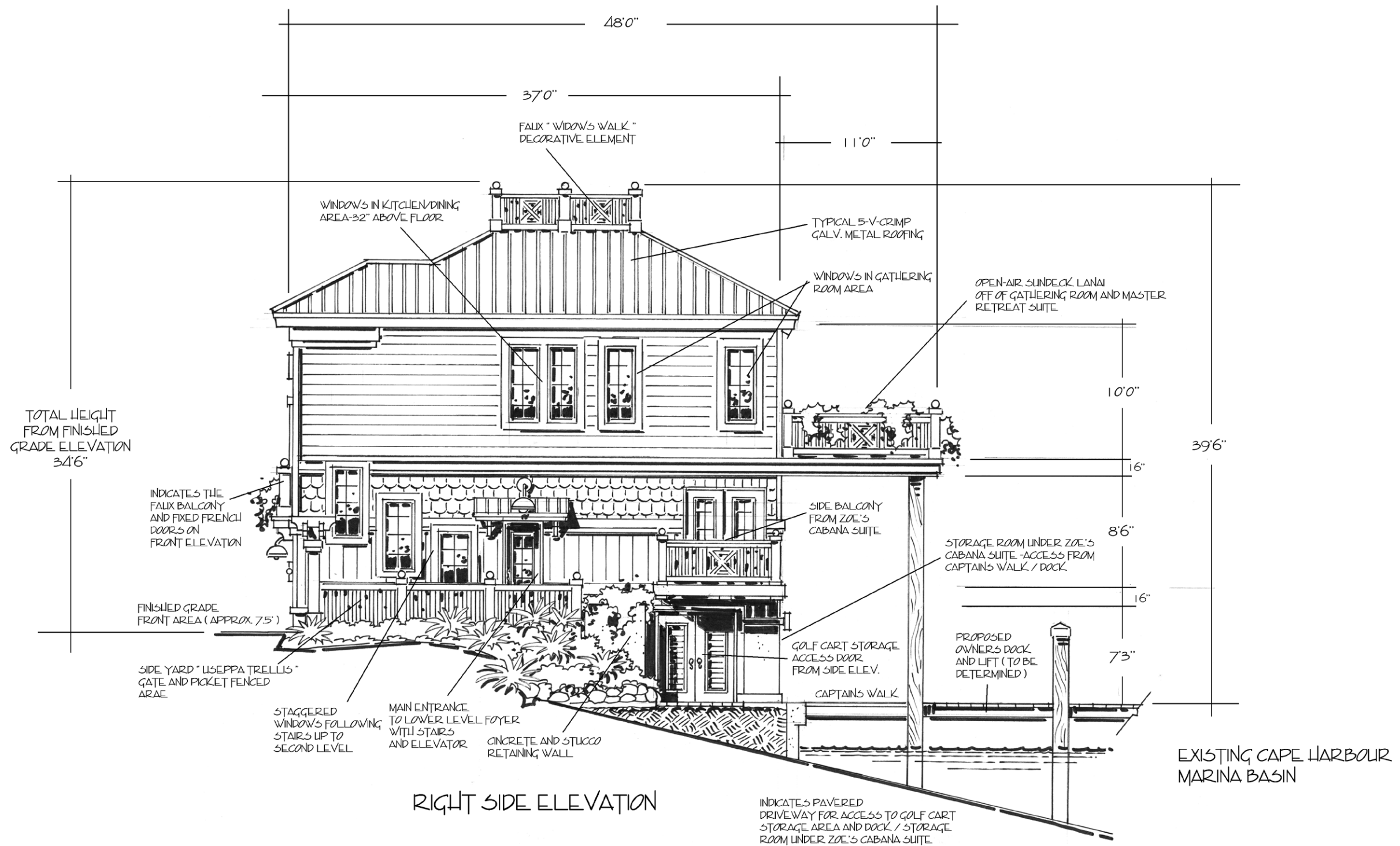
REVISED DATE : JAN. 20. 2009 / DESIGNED BY : STEVEN BRADFORD TURNER / BRADFORD & COMPANY DESIGN GROUP, INC.
 239-541-3906 / SCALE : 1/4" = 1'0"



WILL'S FUNKY FISH HOUSE

REVISED / FINAL GROUND LEVEL CONCEPT PLAN

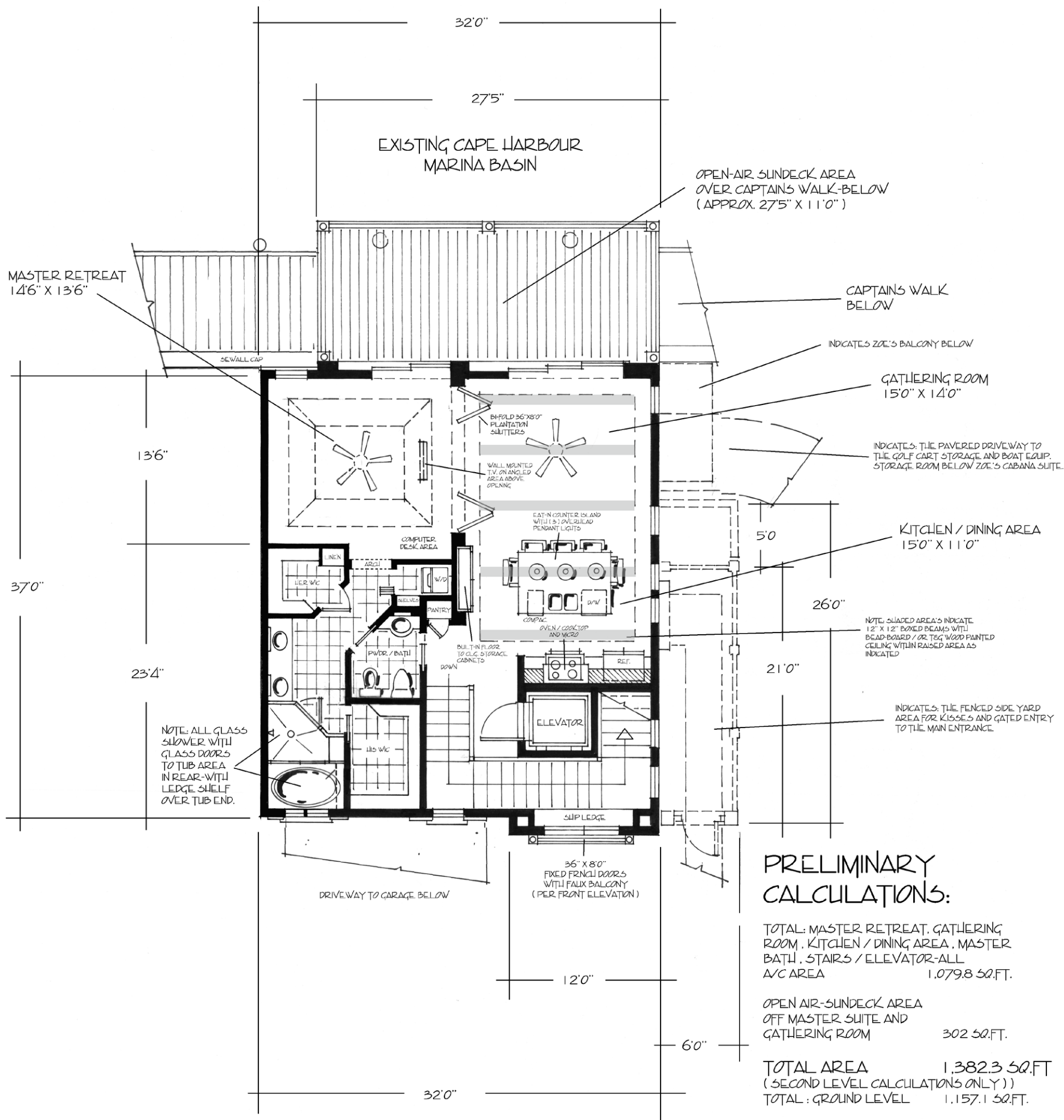
REVISED DATE: JAN. 20, 2009 / DESIGNED BY: STEVEN BRADFORD TURNER
 BRADFORD & COMPANY DESIGN GROUP, INC. / 239-541-3906 / SCALE: 1/4" = 1'0"



WILL'S FUNKY FISH HOUSE

REVISED / FINAL ELEVATION DESIGN CONCEPTS

REVISED DATE : JAN. 20. 2009 / DESIGNED BY : STEVEN BRADFORD TURNER / BRADFORD & COMPANY DESIGN GROUP, INC.
 239-541-3906 / SCALE : 1/4" = 1'0"



PRELIMINARY CALCULATIONS:

TOTAL: MASTER RETREAT, GATHERING ROOM, KITCHEN / DINING AREA, MASTER BATH, STAIRS / ELEVATOR-ALL A/C AREA	1,079.8 SQ.FT.
OPEN AIR-SUNDECK AREA OFF MASTER SUITE AND GATHERING ROOM	302 SQ.FT.
TOTAL AREA (SECOND LEVEL CALCULATIONS ONLY)	1,382.3 SQ.FT.
TOTAL: GROUND LEVEL	1,157.1 SQ.FT.
STORAGE AND GOLF CART STORAGE ROOM UNDER ZOE'S SUITE	338 SQ.FT.
TOTAL AREA	3,102.1 SQ.FT.

WILL'S FUNKY FISH HOUSE

REVISED / FINAL SECOND LEVEL CONCEPT PLAN

REVISED DATE: JAN. 20, 2009 / DESIGNED BY: STEVEN BRADFORD TURNER
 BRADFORD & COMPANY DESIGN GROUP, INC. / 239-541-3906 / SCALE: 1/4" = 1'0"